



Federal Public Service
Social Security

The Evolution of the social situation and social protection in Belgium 2018

Re -Bel

20/06/2019

Sébastien Bastaits

Presentation in 4 parts

Part 1 : Short introduction

Part 2 : Main (poverty) trends observed in our analysis (2018)

Part 3 : Key messages and conclusion

Part 4 : Some “regional” and “child” dimension

Part I : Introduction

A few words on our annual study

- **European Context**

 - EU2020 Target on the reduction of poverty & social inclusion
 - National Reform Program

 - Trends / Evolution (on the last decade)

 - Benchmarking/Ranking (in term of levels)

 - Key messages for policy concerns

- **Main Sources**

 - EU-SILC

 - completed with some national data

Part II

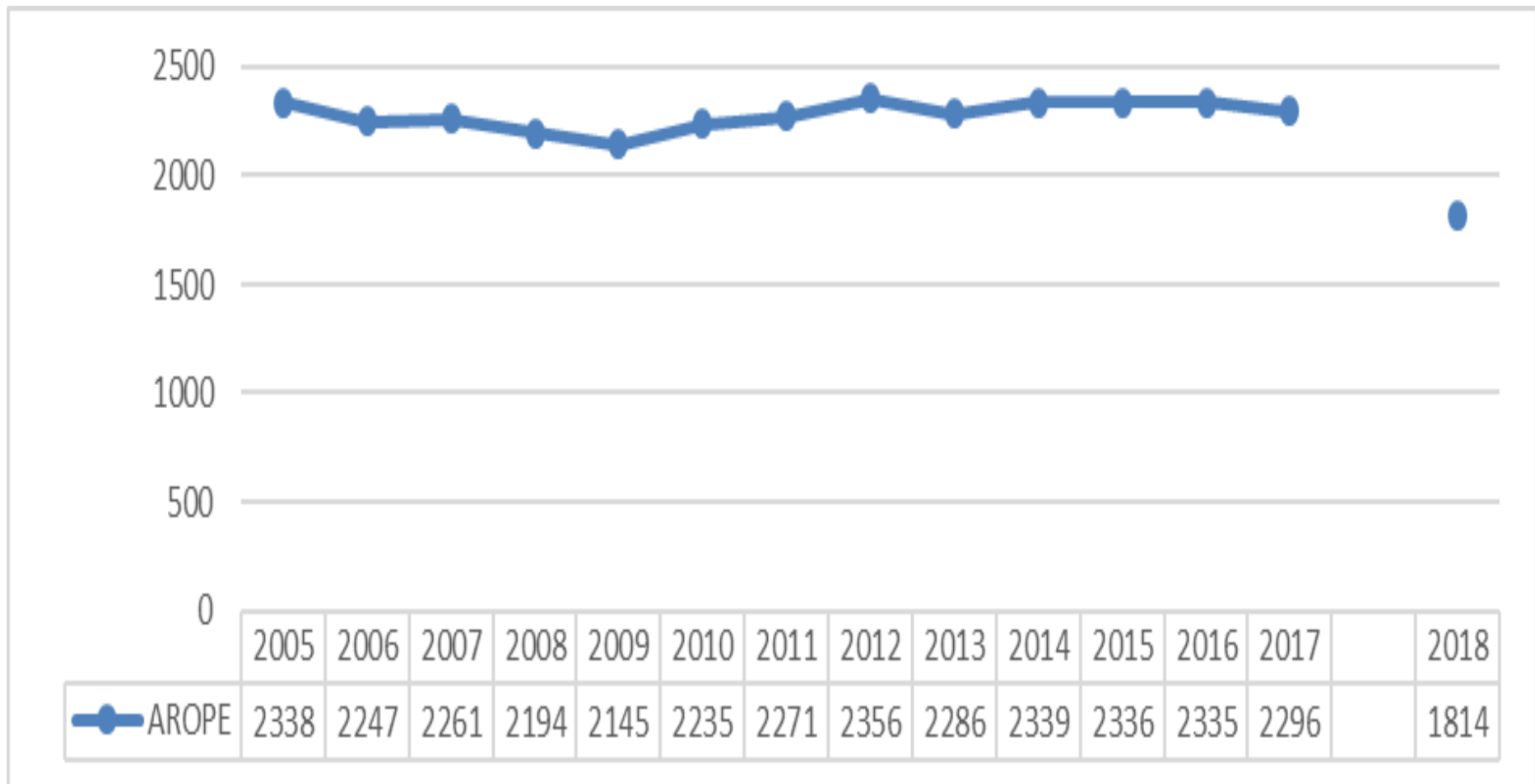
Main (poverty) trends of our Analysis 2018

Main data source : EU-SILC 2017 (LFS 2018)

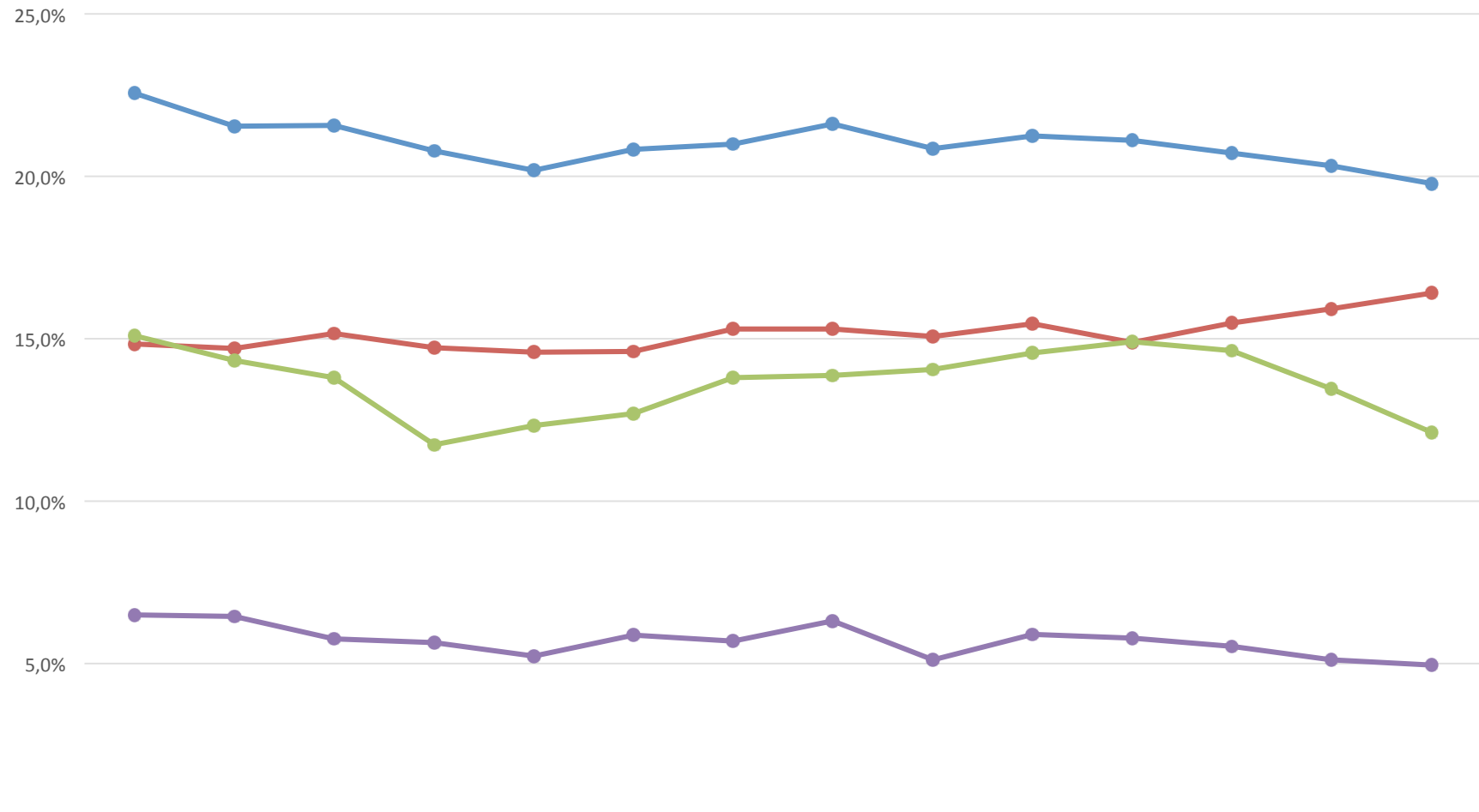
(Data Eu-SILC 2018 – partially published last days)

II.1. Lack of progress in Europe 2020 objective on the reduction in the number of people at-risk-of-poverty or social exclusion

(AROPE – number of persons x 1000)

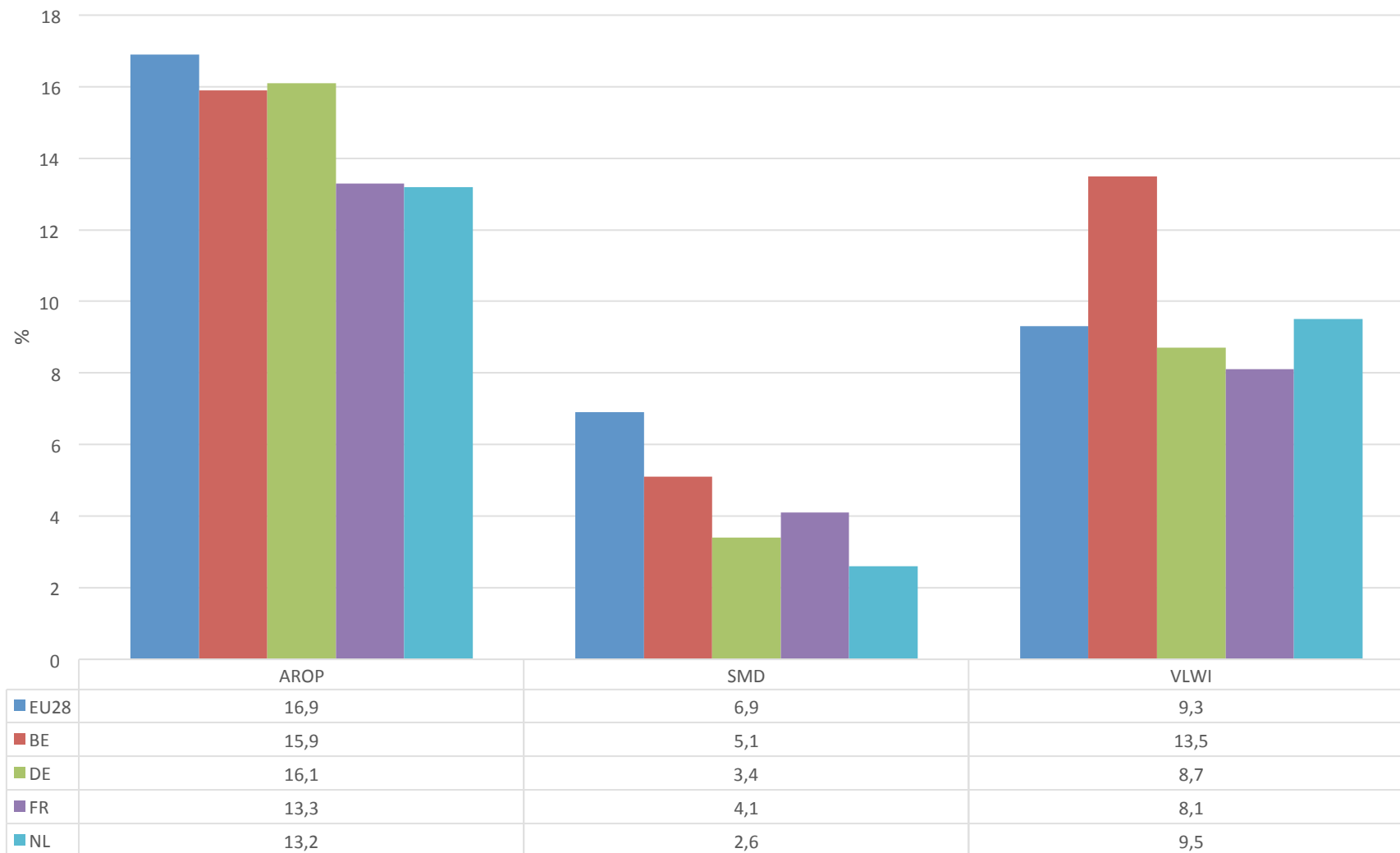


II.2. Overall stability – but differences between indicators (SILC 2018)



	2005	2006	2007	2008	2009	2010	2011	2012	2013	2014	2015	2016	2017	2018
AROPE	22,6%	21,5%	21,6%	20,8%	20,2%	20,8%	21,0%	21,6%	20,8%	21,2%	21,1%	20,7%	20,3%	19,8%
AROP	14,8%	14,7%	15,2%	14,7%	14,6%	14,6%	15,3%	15,3%	15,1%	15,5%	14,9%	15,5%	15,9%	16,4%
VLWI	15,1%	14,3%	13,8%	11,7%	12,3%	12,7%	13,8%	13,9%	14,0%	14,6%	14,9%	14,6%	13,5%	12,1%
SMD	6,5%	6,4%	5,7%	5,6%	5,2%	5,9%	5,7%	6,3%	5,1%	5,9%	5,8%	5,5%	5,1%	4,9%

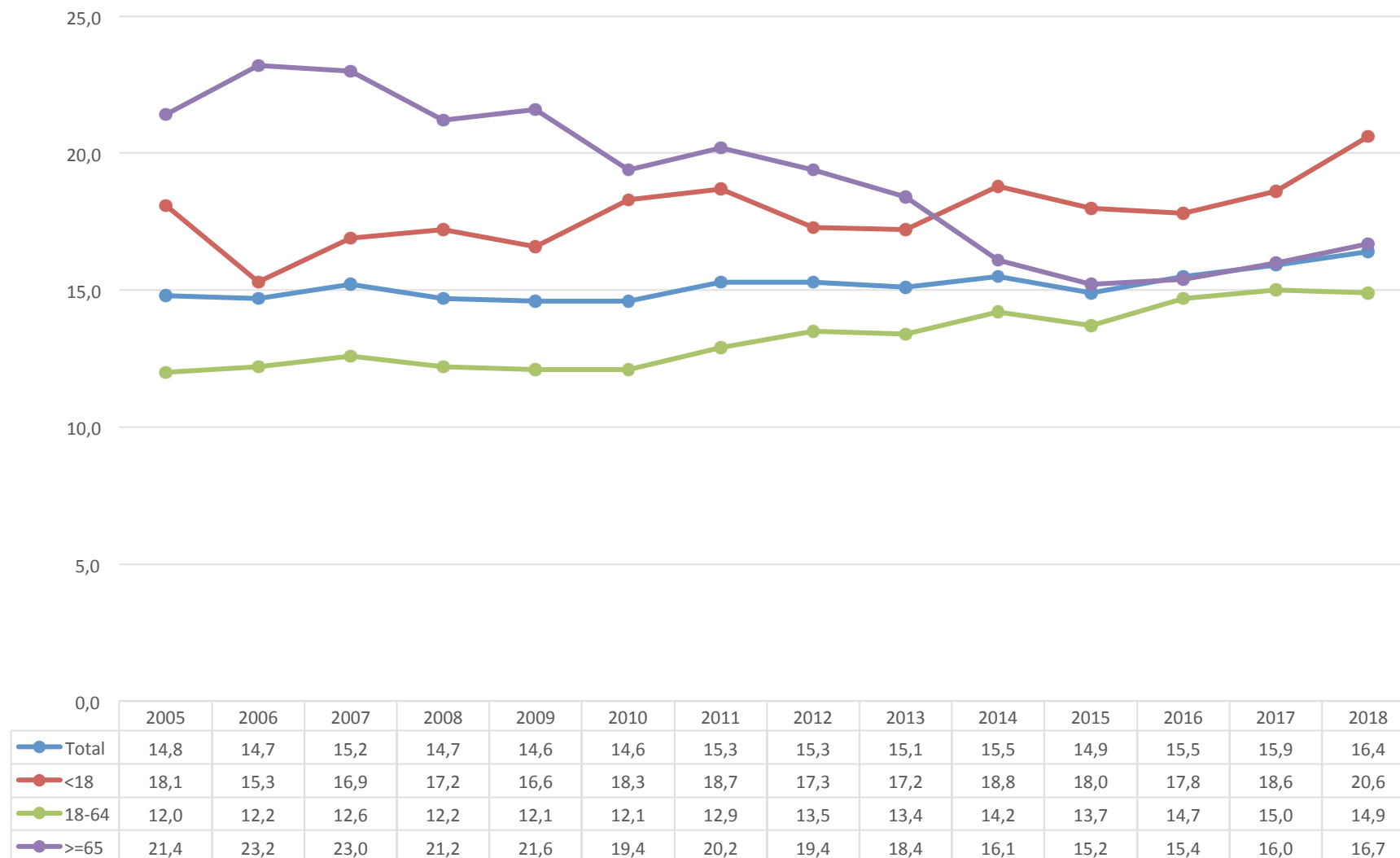
II.3. Decomposition of AROPE and European Comparison (SILC 2017- in %)



II.4. Opposing trends by age

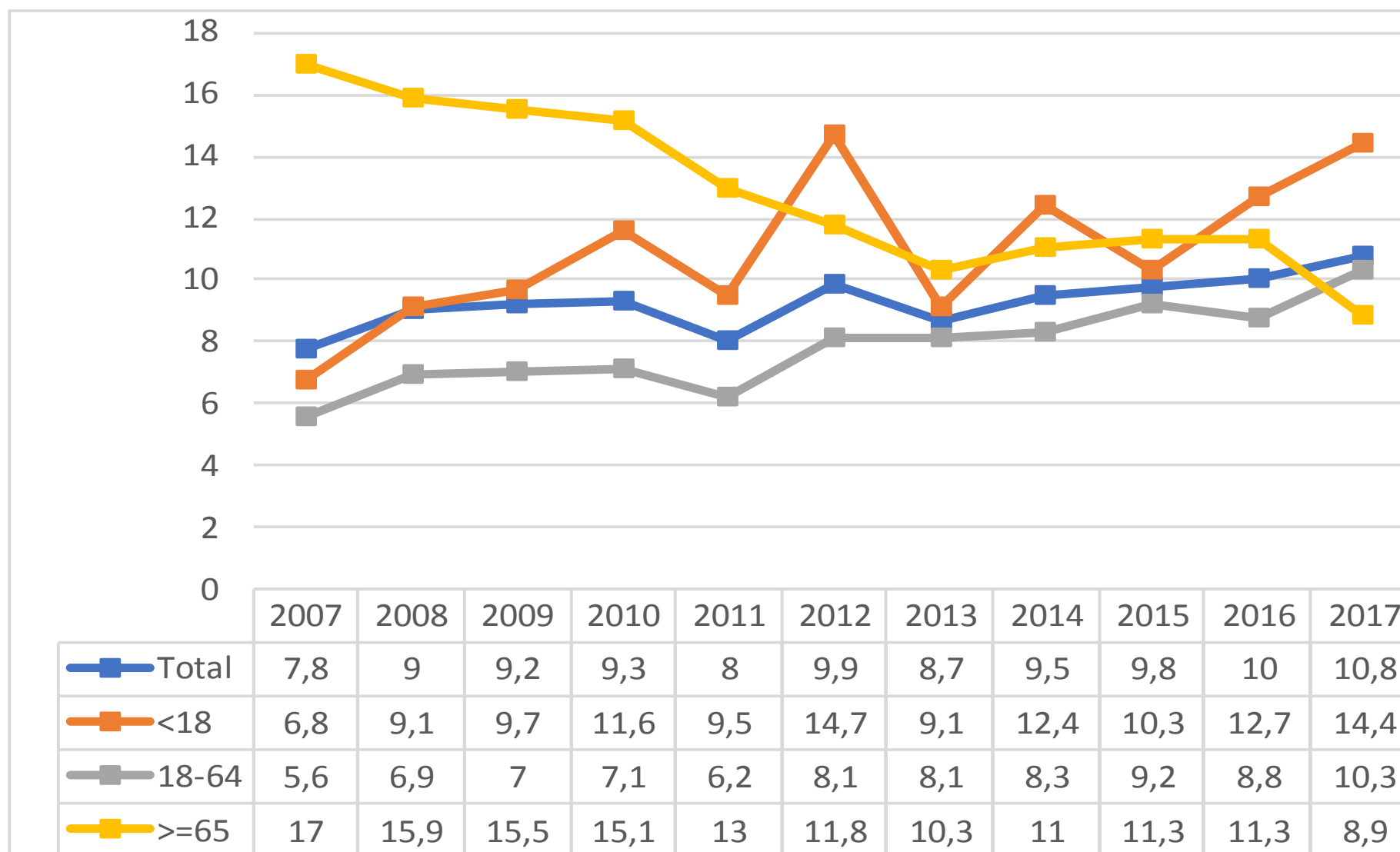
Improvement of the situation of the elderly

a) Diminution of poverty (AROP – SILC 2018)



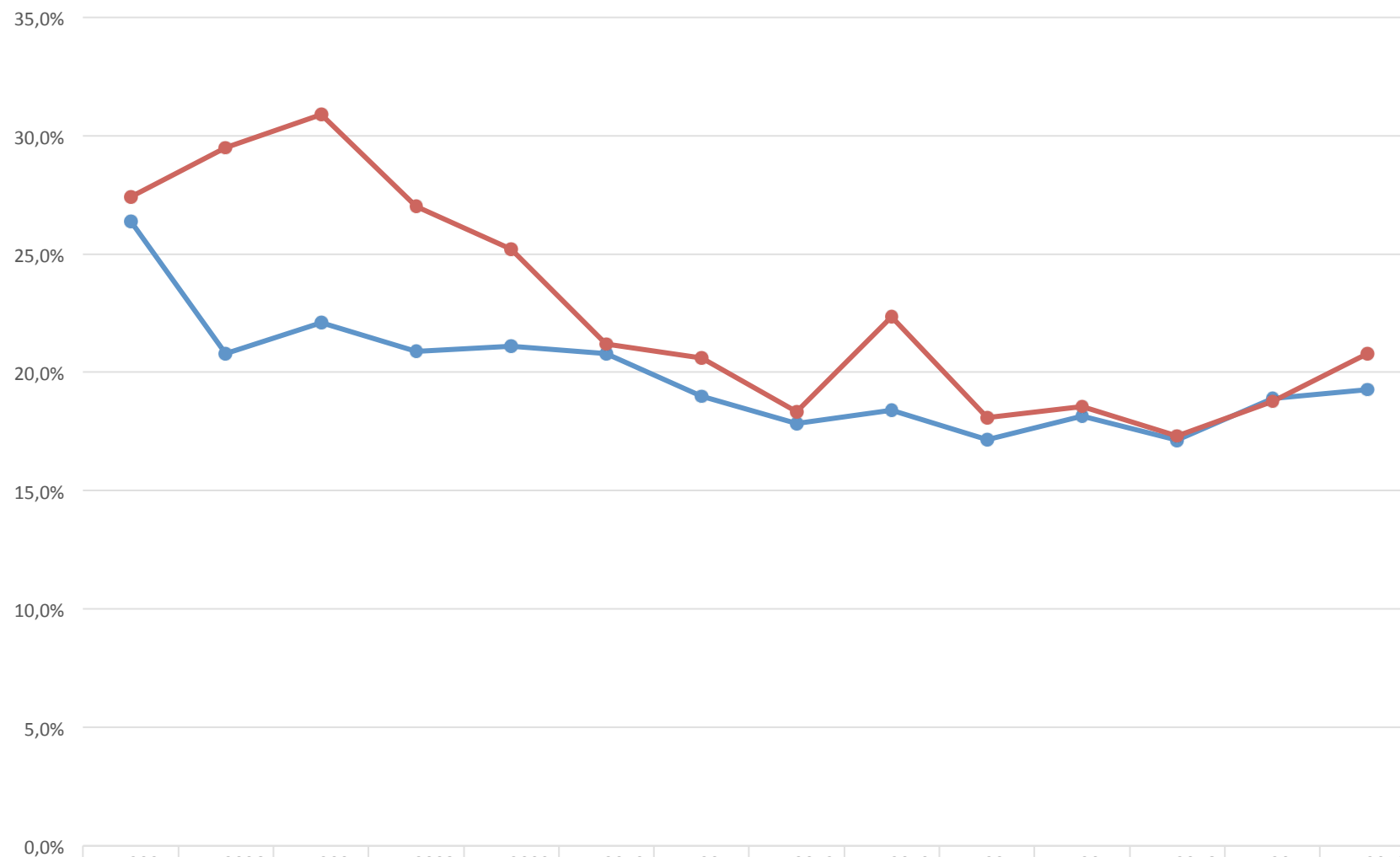
II.4.Improvement of situation of the elderly

b) Decrease of persistent poverty (SILC 2017)



II.4. Improvement of situation of the elderly

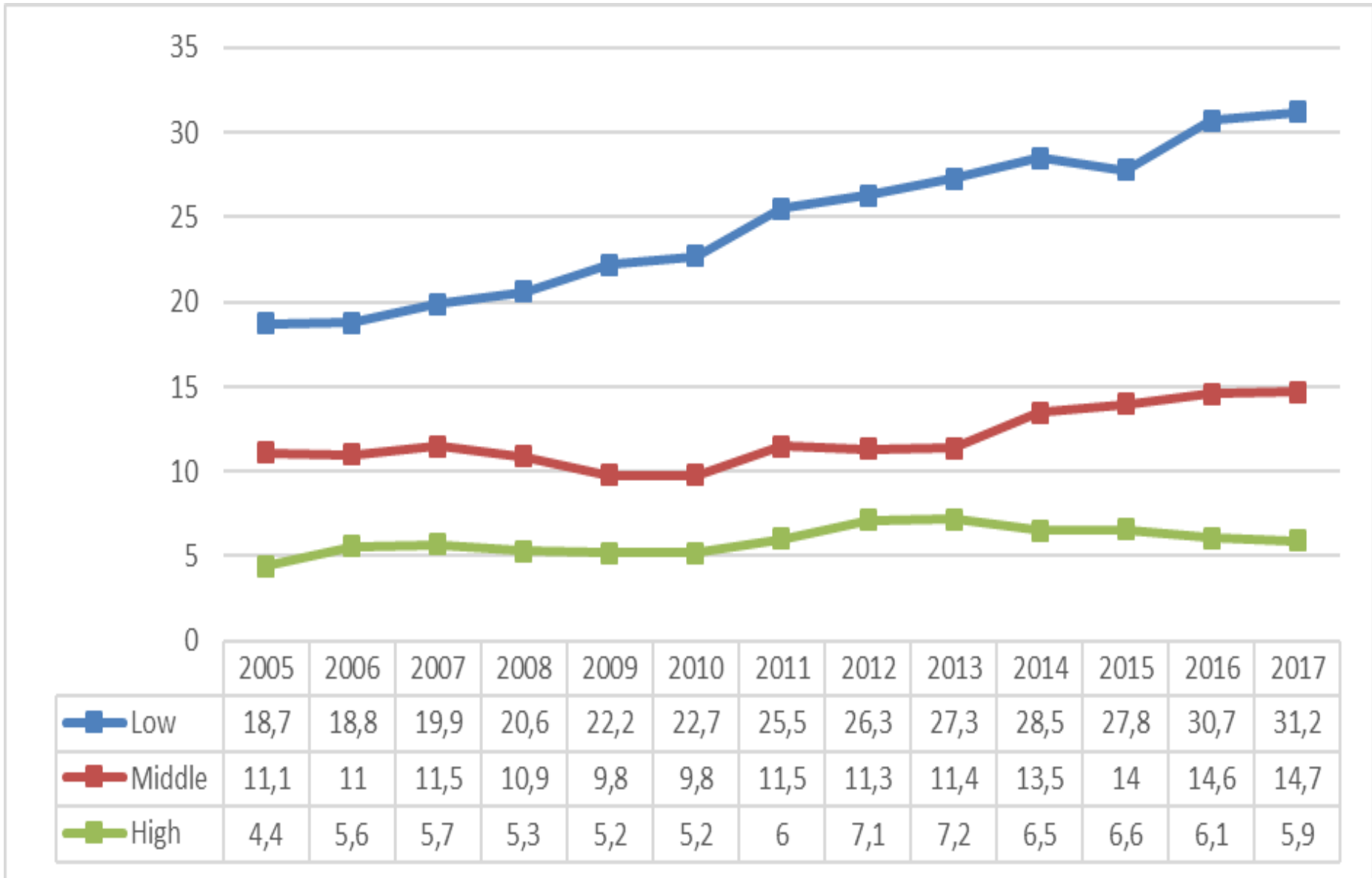
c) gender difference (AROP single elderly – SILC 2018)



● single male	26,4%	20,8%	22,1%	20,9%	21,1%	20,8%	19,0%	17,8%	18,4%	17,2%	18,2%	17,1%	18,9%	19,3%
● single female	27,4%	29,5%	30,9%	27,0%	25,2%	21,2%	20,6%	18,3%	22,3%	18,1%	18,6%	17,3%	18,8%	20,8%

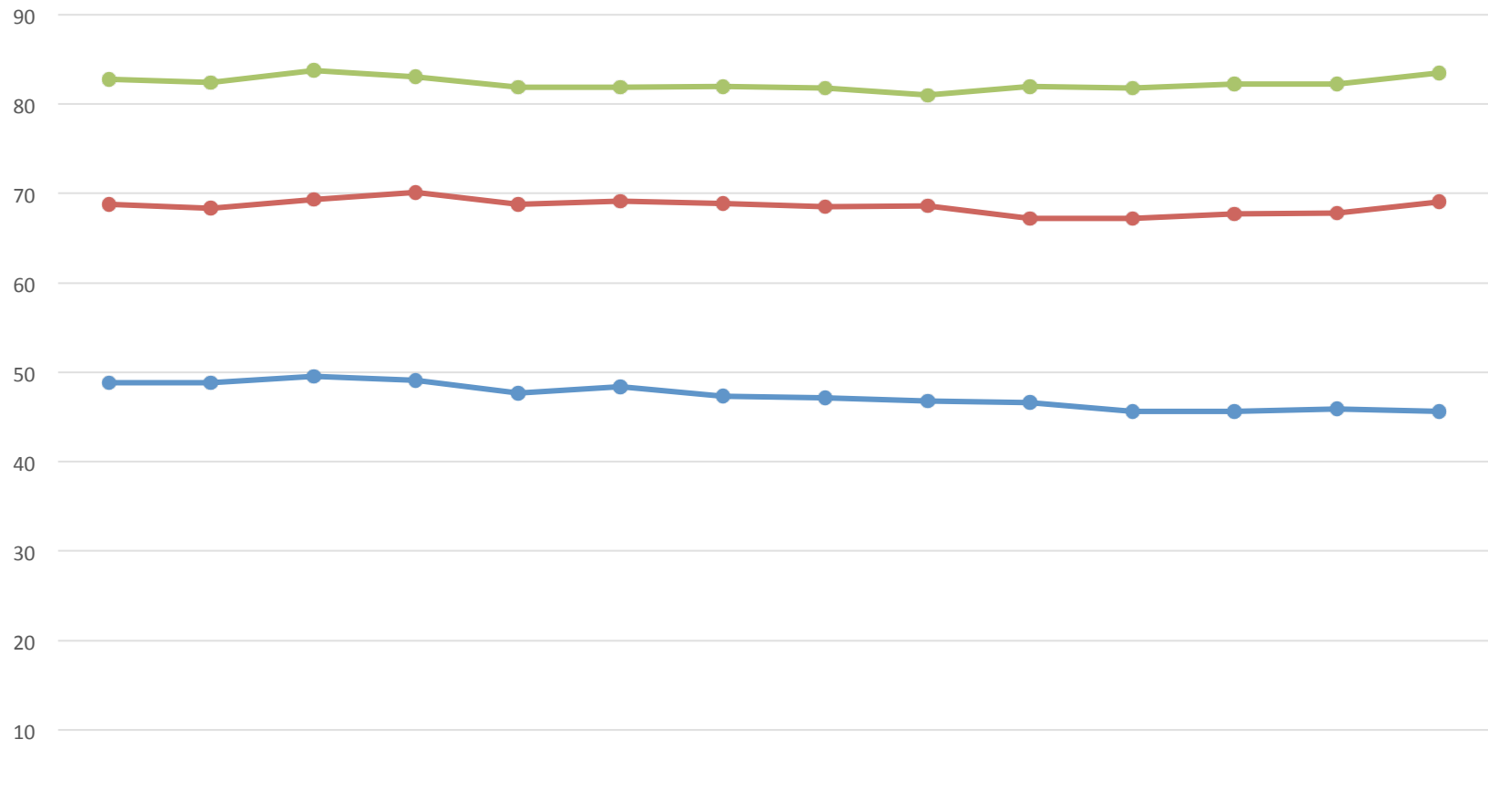
II.5. Increasing divergency in the working age population

1° In term of Poverty (AROP by education levels 18/64 – SILC 2017)



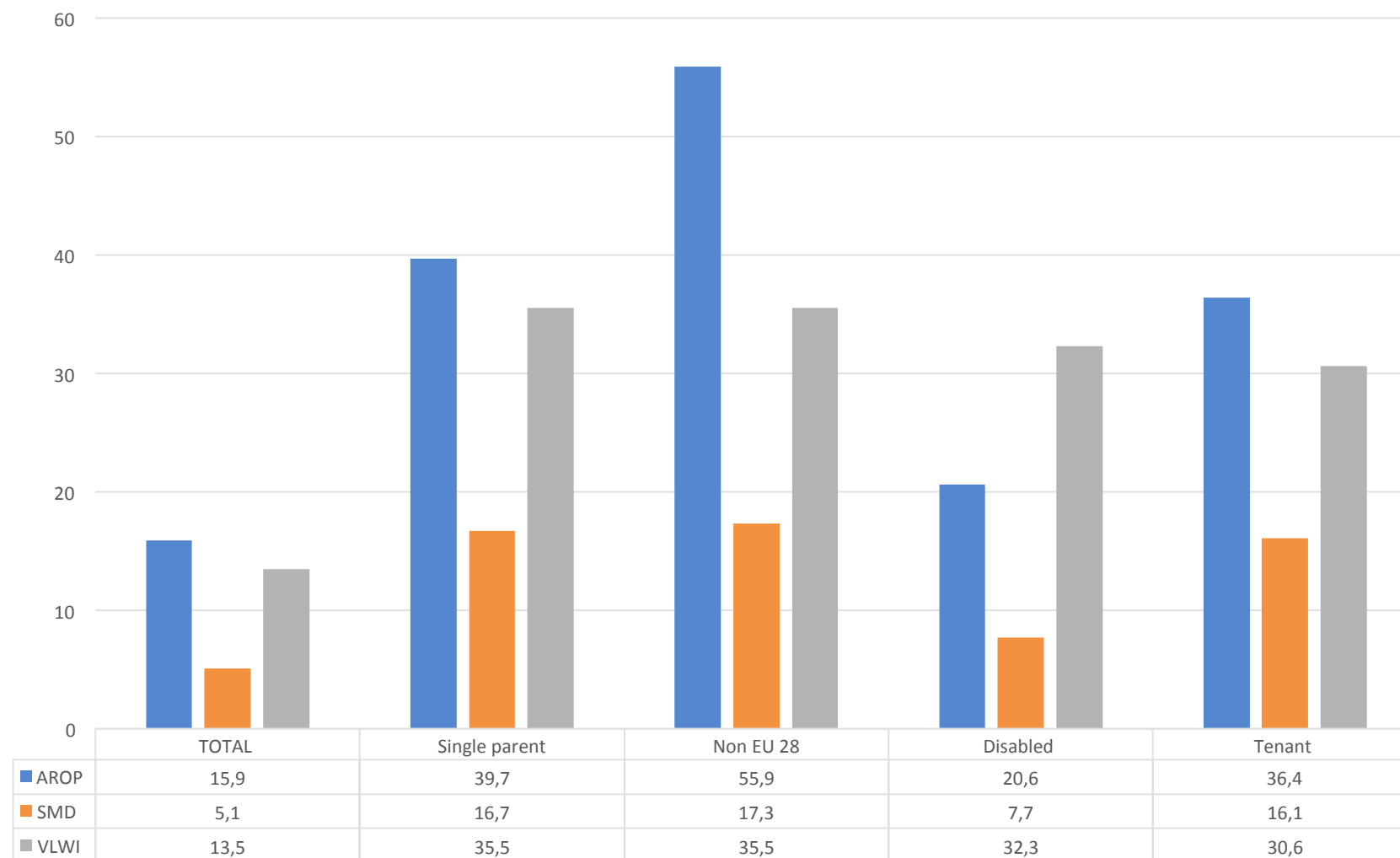
II.5. Increasing divergency in the working age population

2°) In the Labour Market (employment rate by education levels – 20/64 – LFS 2018)

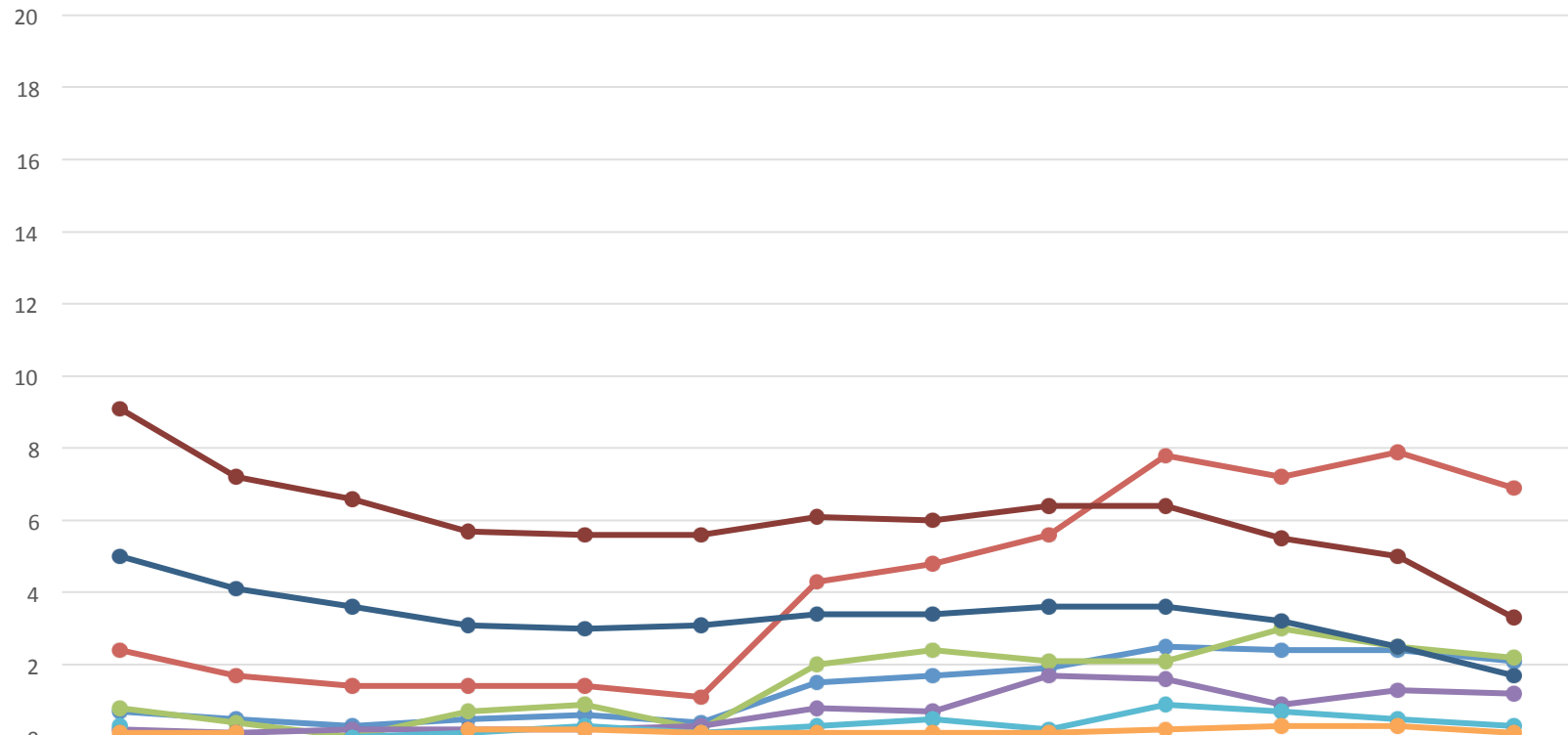


	2005	2006	2007	2008	2009	2010	2011	2012	2013	2014	2015	2016	2017	2018
● low educ.	48,8	48,8	49,5	49,1	47,7	48,4	47,3	47,1	46,8	46,6	45,6	45,6	45,9	45,6
● middle	68,8	68,3	69,3	70,1	68,8	69,1	68,9	68,5	68,6	67,2	67,2	67,7	67,8	69
● high	82,8	82,4	83,7	83	81,9	81,9	82	81,8	81	82	81,8	82,2	82,2	83,5

II.6. Maintaining of specific categories at risk (SILC 2017 – in%)



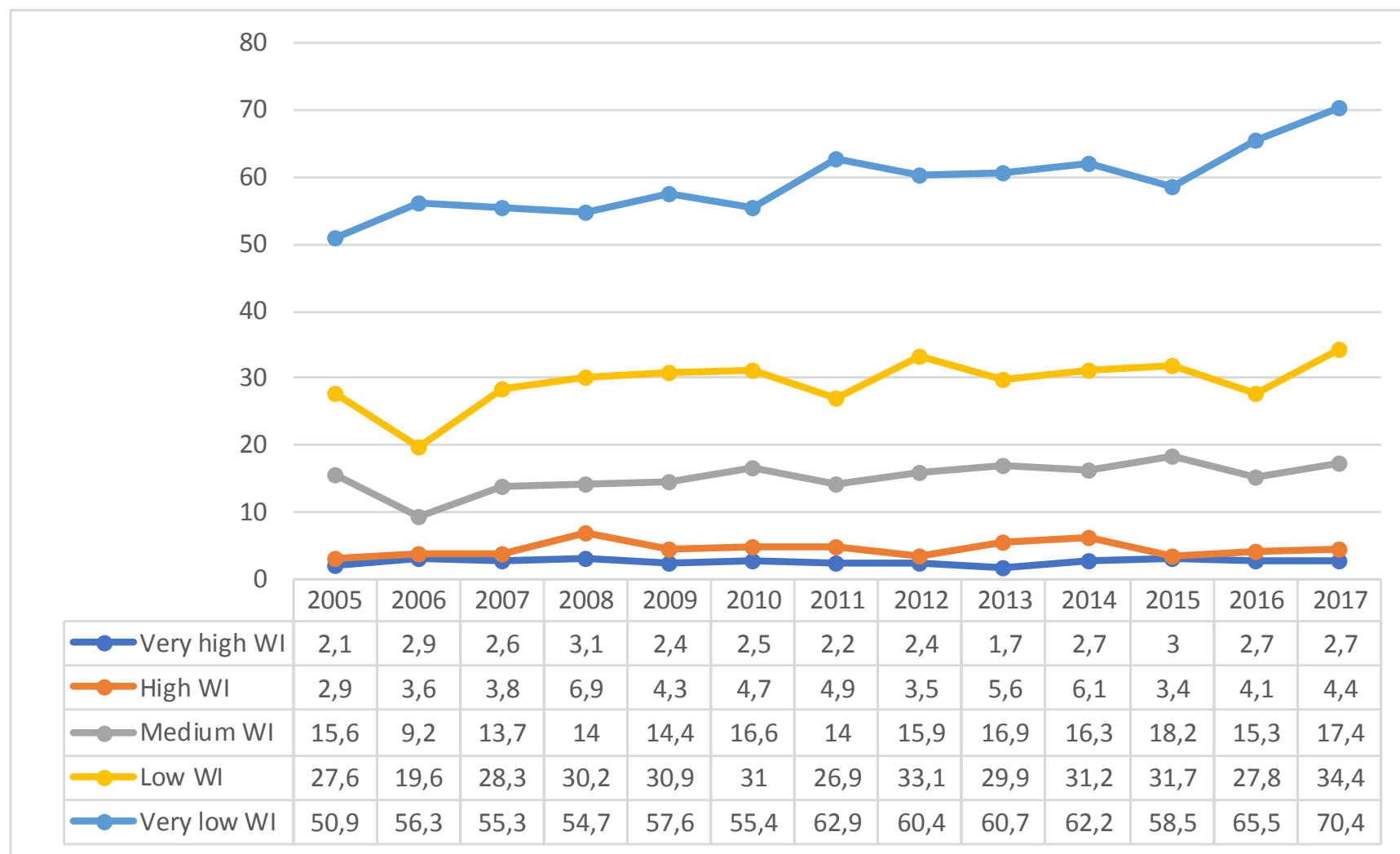
II.7. Increasing divergency in specific fields as in health Unmet need by income level (SILC 2017)



	2005	2006	2007	2008	2009	2010	2011	2012	2013	2014	2015	2016	2017
Total	0,7	0,5	0,3	0,5	0,6	0,4	1,5	1,7	1,9	2,5	2,4	2,4	2,1
1st	2,4	1,7	1,4	1,4	1,4	1,1	4,3	4,8	5,6	7,8	7,2	7,9	6,9
2nd	0,8	0,4	0	0,7	0,9	0,2	2	2,4	2,1	2,1	3	2,5	2,2
3rd	0,2	0,1	0,2	0,2	0,2	0,3	0,8	0,7	1,7	1,6	0,9	1,3	1,2
4th	0,3		0	0,1	0,3	0,1	0,3	0,5	0,2	0,9	0,7	0,5	0,3
5th	0,1	0,1		0,2	0,2	0,1	0,1	0,1	0,1	0,2	0,3	0,3	0,1
EU27 total	5	4,1	3,6	3,1	3	3,1	3,4	3,4	3,6	3,6	3,2	2,5	1,7
EU27 1st quint.	9,1	7,2	6,6	5,7	5,6	5,6	6,1	6	6,4	6,4	5,5	5	3,3

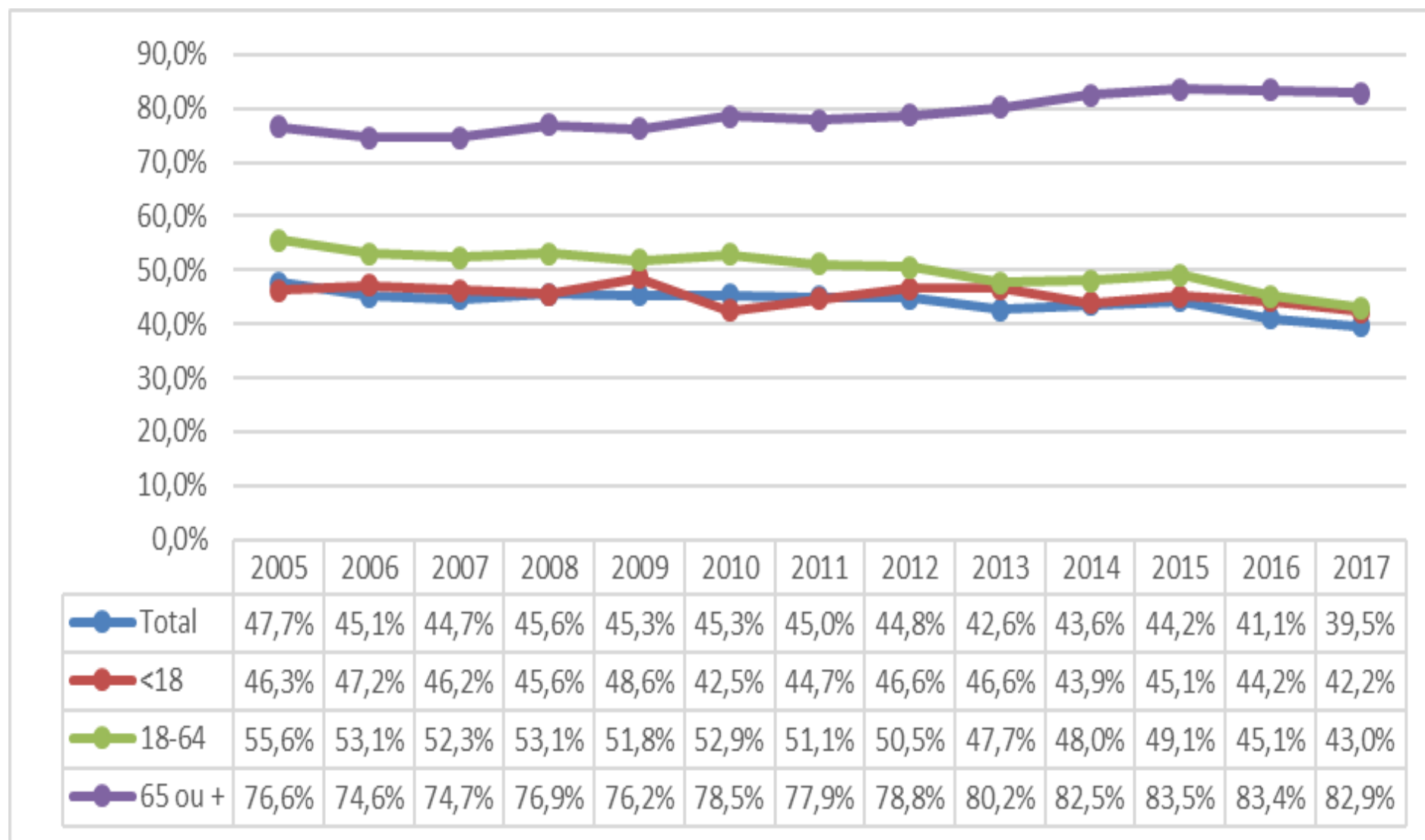
II.8. Decreasing adequacy/efficiency of social Protection ?

AROP by work Intensity



II.8. Decreasing Adequacy/efficiency of social Protection ?

Poverty reduction due to social transfers (excluded pension – except for 65+)



Part III : Key messages and Conclusions

Overall social stability (in comparison with some countries) notably during and after the crisis period ...

Improvement of the situation of the elderly

But

Despite high social spending :

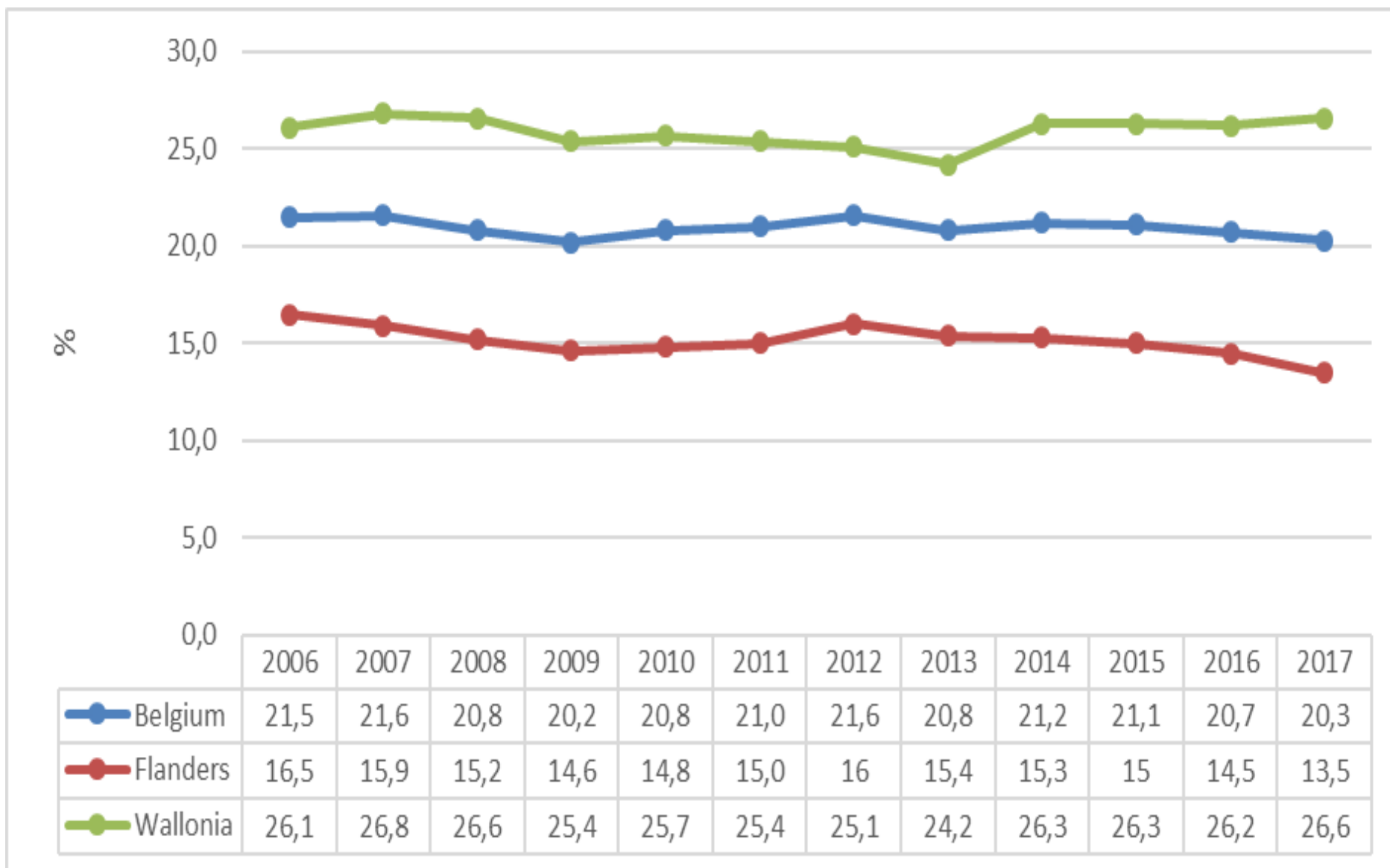
No trend towards Europe 2020 objective in term of poverty

Deterioration for some groups (as the low skilled) in the working age population, notably in reason of inclusiveness of the Labour Market but also in reason of decreasing adequacy of social benefits

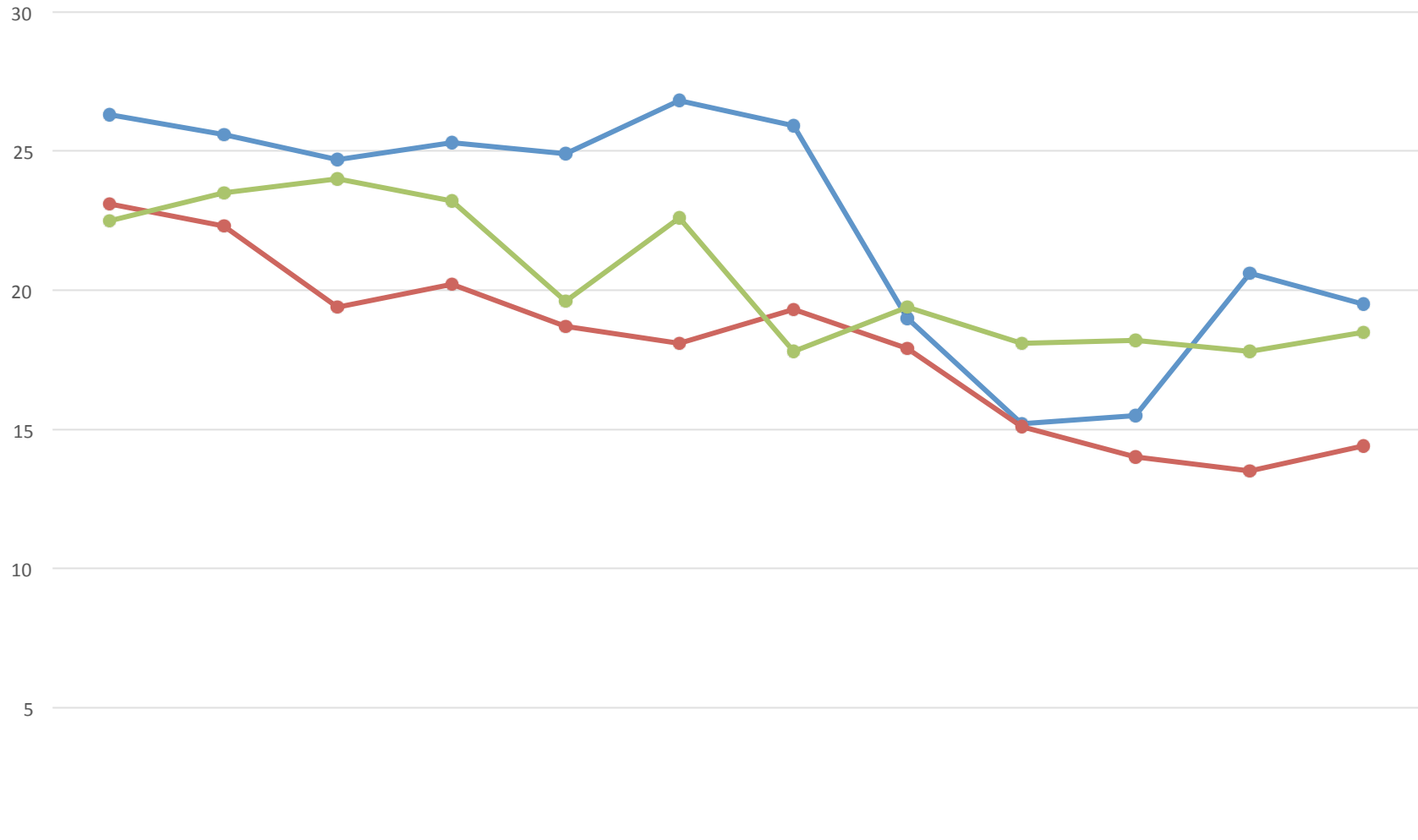
--> Increasing pressure on our social cohesion system ?

Part IV : Some Regional and Child dimension

IV.1. Trends by regions (AROE) with differences in level and recent divergencies

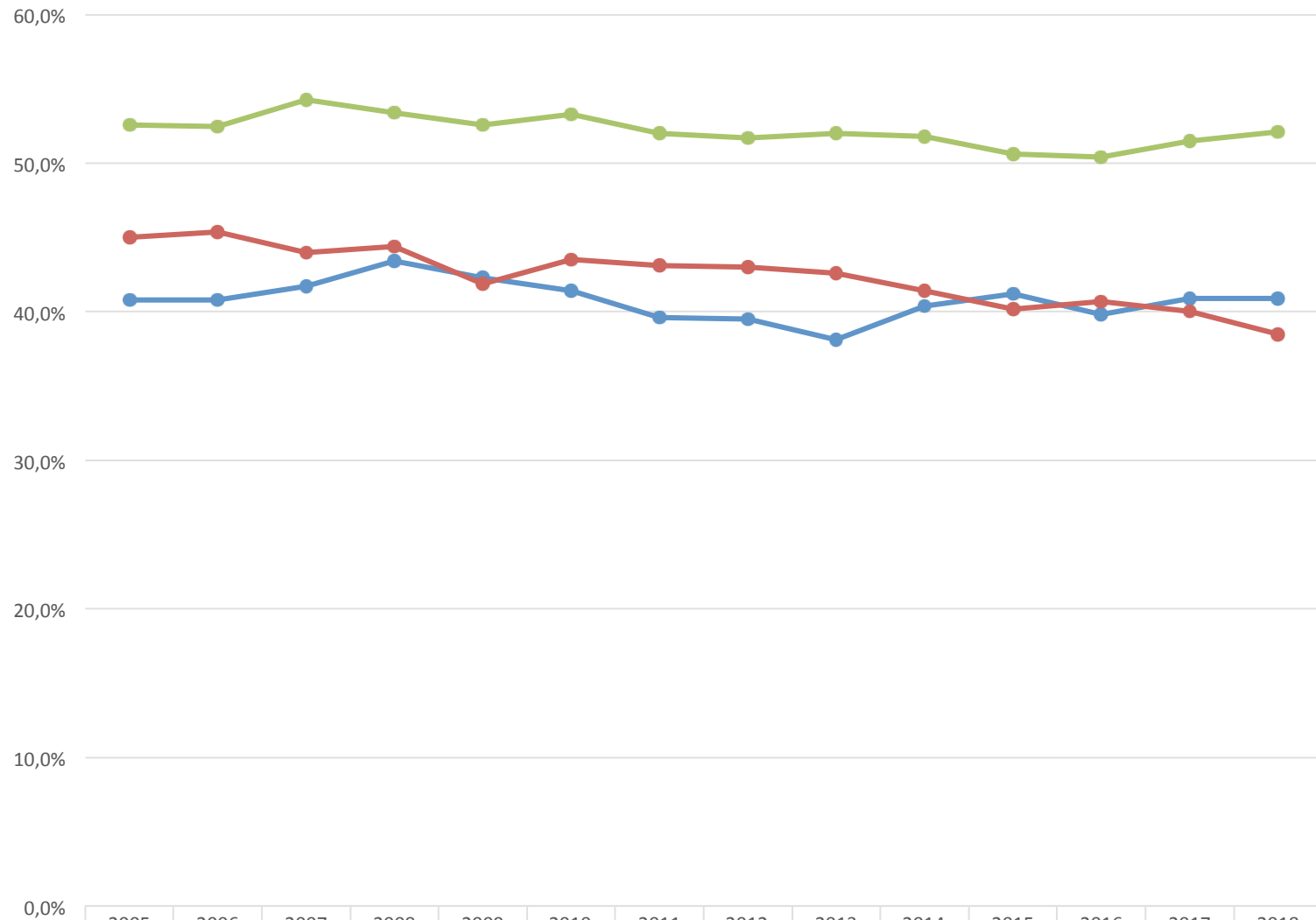


IV.2. Trends by region (AROP for elderly)



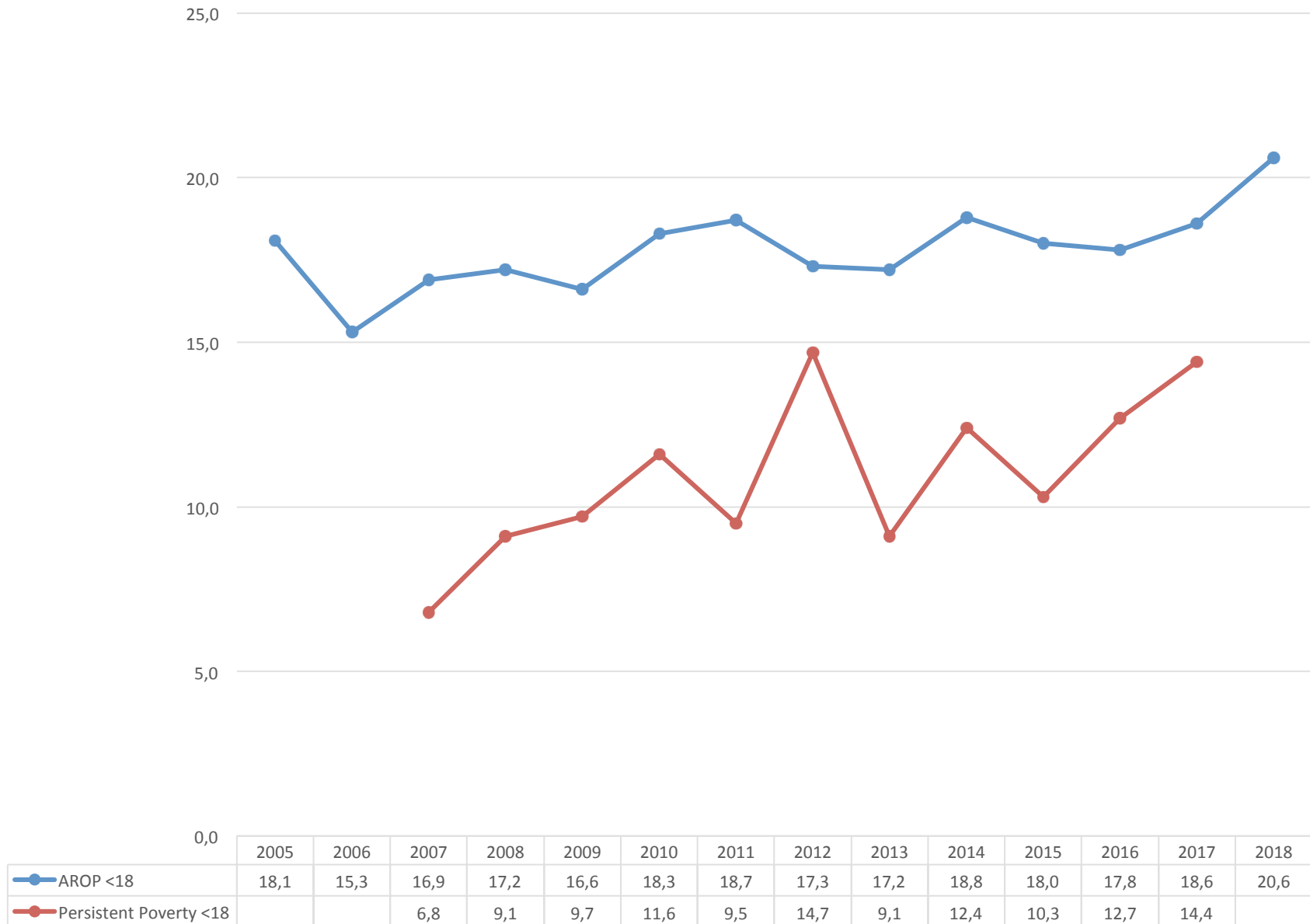
	2006	2007	2008	2009	2010	2011	2012	2013	2014	2015	2016	2017
BR	26,3	25,6	24,7	25,3	24,9	26,8	25,9	19	15,2	15,5	20,6	19,5
FL	23,1	22,3	19,4	20,2	18,7	18,1	19,3	17,9	15,1	14	13,5	14,4
WA	22,5	23,5	24	23,2	19,6	22,6	17,8	19,4	18,1	18,2	17,8	18,5

IV.3. Trends by region (Employment for low educated)



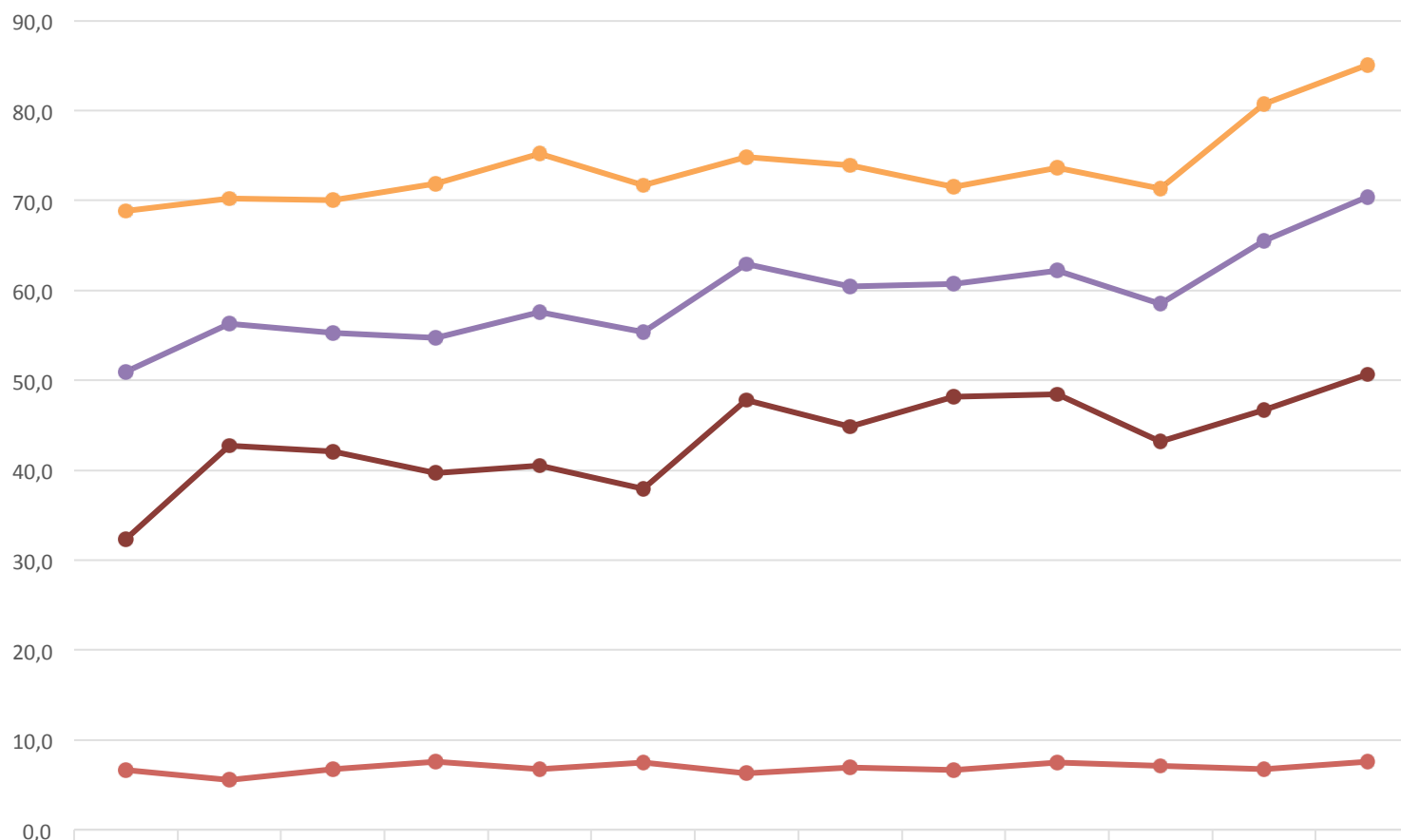
	2005	2006	2007	2008	2009	2010	2011	2012	2013	2014	2015	2016	2017	2018
Brussels: Low education	40,8%	40,8%	41,7%	43,4%	42,3%	41,4%	39,6%	39,5%	38,1%	40,4%	41,2%	39,8%	40,9%	40,9%
Wallonia: Low education	45,0%	45,4%	44,0%	44,4%	41,9%	43,5%	43,1%	43,0%	42,6%	41,4%	40,2%	40,7%	40,0%	38,5%
Flanders: Low education	52,6%	52,5%	54,3%	53,4%	52,6%	53,3%	52,0%	51,7%	52,0%	51,8%	50,6%	50,4%	51,5%	52,1%

IV.4. Child poverty (AROP + Persistent poverty)



IV.5. Child poverty

AROP by work intensity of the household, with and without children



	2005	2006	2007	2008	2009	2010	2011	2012	2013	2014	2015	2016	2017
BE WI other than VLWI	6,6	5,5	6,7	7,6	6,7	7,5	6,3	6,9	6,6	7,5	7,1	6,7	7,6
BE VLWI total	50,9	56,3	55,3	54,7	57,6	55,4	62,9	60,4	60,7	62,2	58,5	65,5	70,4
BE VLWI + child	68,8	70,2	70,0	71,9	75,2	71,7	74,8	73,9	71,5	73,6	71,3	80,7	85,1
BE VLWI no child	32,3	42,7	42,1	39,7	40,5	37,9	47,8	44,8	48,2	48,4	43,2	46,7	50,7

Thank you for your attention !

<http://socialsecurity.belgium.be/fr/publications>



<http://statbel.fgov.be/fr/statistiques/chiffres/>

<http://ec.europa.eu/eurostat/data/database>